

BLOOD DONING

Monday 25th November and
Thursday 11th December
Charmandean Centre, Forest Road
2 - 4.30pm & 5.30 - 8pm
Call 0300 123 23 23 to book an
appointment or just walk in to give
your armful.

*Blood supplies drop dangerously low
over the Christmas period.
The National Blood & Transplant
Service need a minimum of 200,000
donations to cover the festive season,
especially blood type O.
If the above sessions are not suitable
for you go to www.blood.co.uk and
click on 'session finder' to find an
alternative time and place to donate.
Or call 0300 123 23 23*

CONTACT INFORMATION:

VICAR

Phone: 01903 203309
Email: vicar.stgeorge@gmail.com

CHURCH OFFICE

Phone: 01903 219672
Email:
office@stgeorgesworthing.org.uk

Office open Monday, Thursday & Friday
9.3am - 12.30pm

**The office will be closed Thursday
30th October to Friday 7th November**

Please get items for Pews News to
the office by noon on Thursday

Safeguarding Representatives:

Children: June Elphick
Adults: Morag Hardinge
DBS Checks: Hilary Ferries

More info at: www.thinkyouknow.co.uk

WHAT'S ON

Sunday 23rd

8.00am Holy Communion
10.30am Morning Prayer
Young Followers
2.45pm Celebration Singers

Monday 24th

10.30am Monday Nomads
7.30pm PCC

Tuesday 25th

6.00pm Brownies

Wednesday 26th

10.30am Vicarage Morning Group
10.30am East end Home Group
7.30pm Vicarage Evening Group

Thursday 27th

10.30am Toddlers

Friday 28th

5.30pm Rainbows
7.00pm Guides
7.30pm Music Group

Saturday 29th

10.00am Koinonia Christmas
Coffee Morning

Sunday 30th

First Sunday of Advent
8.00am Holy Communion
10.30am Holy Communion
Young Followers
2.45pm Celebration Singers

PEWS NEWS



Ecclesiastical Parish of St George,
East Worthing.
Registered Charity No 1131206

www.stgeorgesworthing.org.uk

knowing Jesus and making him known

SUNDAY 23rd November 2014 Sunday before
8.00am Holy Communion Advent
10.30am Morning Prayer 'Stir Up'
Sunday

STEWARDSHIP MAKES SENSE

A Stewardship presentation last Sunday reminded us of the large financial problem we face to run our Church. Increased Giving this year is helping to reduce the deficit to around £500 per week (equivalent to £26,000 loss p.a.). But with this huge deficit we will run out of money from Reserves so we will be able to afford repairs and improvements to our buildings in the future. Convenient ways to turn this around were explained, including regular Giving through the Parish Direct Giving Scheme, or envelope scheme. If you are a tax payer, by signing up to Gift Aid the Church can claim an extra 25% on top of your giving, from the tax man. In the Pilgrim Chapel area you will find helpful leaflets about regular Giving and also leaving a lasting legacy by including a gift to the Church in your will. One of the Stewardship Team will be happy to talk further with you and answer any questions in confidence: Laura Preston, Brian (Vicar), Keith Calver, Peter Rhodes.

Thank you for all that you do; giving your time, skills, money, prayers, love and support for the life and ministry at St Georges. Together we can make this deficit disappear.

*We make a living by what we get;
we make a life by what we give.*

Not a new situation...

In 1897 it cost an average of £4 a week to run St George's Church East Worthing, but only £2 12s was being collected from parishioners over the same period.

Worthing Journal November 2014

*Please take PEWS NEWS home with you and use as a
Prayer and Information Guide throughout the coming week*

PRAYER NEEDS

Members and friends of the fellowship in need of our prayers this week: **Mavis Brown; Maureen Charlesworth; Joan Craig; Joyce Daley; Maureen Dawson; John Houghton; Pam Hollis; Michael Jones; Mary Kershaw; Joy Russell; the family of Sybil Webb.**

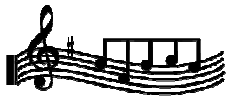


And for:

The PCC - meeting tomorrow evening
Jo Robinson - preparing to return to the UK
Alan Purser - and the work of **Crosslinks**

Please feel free to join us every Sunday morning at 9.45am in the Vicar's Vestry for a time of prayer before the morning service.

ORGANIST'S NOTES



The Voluntary after the service today will be the Sonata 8 in C by Carlos Seixas (1704-42), organist of the court and cathedral, Lisbon, who left over 100 keyboard sonatas in MSS. This lively example is in one through-composed movement in C time in two voices followed by two

MONDAY GROUP...

will be meeting at Pat Hill's home tomorrow, **24th November**, to pack shoeboxes for **Link to Hope**. For more information please speak to one of the members of Monday Group.

This week's HOME GROUPS

Monday

- **Monday Nomads**
10.30am at 20 Malvern Close

Wednesday

- **Vicarage Morning Group**
10.30am at 14 Pendine Avenue
- **East End Group**
10.30am at 30 Ophir Road
- **Vicarage Evening Group**
7.30pm at 14 Pendine Avenue

Please speak to one of today's Greeters, the Vicar or a Warden if you are interested in joining one of our informal Bible study groups.

HOMEMADE JAM

There are still just a few jars of Helen's homemade jam available in the church office Monday, Thursday & Friday mornings.



Strawberry & Apple, Apricot, and Blackberry & Apple. Proceeds towards the Ashburnham weekend.

COFFEE

Helen A is drawing up the new Coffee Rota for 2015. If you can commit to



helping with this important part of our fellowship once every 6 - 8 weeks please have a word with her as soon as possible. The new rota will be

MEN'S GROUP CHRISTMAS MEAL

Christmas evening meal at Ye Olde House at Home, Broadwater Street East, Worthing on **Monday 1st December** at 8pm. Cost £15.95 per person. £5.00 deposits to Brian Masters by Monday 24th November please.



FORTHCOMING EVENTS... *more details at the back of the church...*

Saturday 29th November

- **Christmas Coffee Morning**
Koinonia, 4 Winchester Road, 10am - noon

Tuesday 2nd December

- **Faith in the Fog**
An evening with Jeff Lucas & Searchlight Theatre Company. Worthing Baptist Church 7.30pm

Saturday 13th &

Sunday 14th December

- **Christmas Tree Festival**
St Botolphs Church, for WCHP

BIBLE READING NOTES

It's the time of year to order your Bible Notes for 2015. There are lots of styles available including notes for very young children - it's never too early to start your child reading the Bible. To place an order or for more information please speak to **Robina Edser** as soon as possible. **Orders with payment must be received by 1st December.**

PCC

The PCC meets tomorrow (24th) at 7.30pm in the Church. Documents for PCC members are available either by email or in the pigeon holes. Please contact Keith Calver or the Office if you haven't received yours.

PARK PROJECT

Help **WCHP** secure funding to improve facilities in Beach House Park. On **Tuesday 25th November** you will have the opportunity to support the charity in obtaining £50,000 funding from the People's Millions to enable the installation of 5 concrete chess boards and secure the services of a mentor to work alongside clients of WCHP and members of the public to improve the flower beds and borders in the park, restoring it to its former glory. This project will enable WCHP and their clients give back something to the community that has helped them for the last 23 years.

Watch Meridian Tonight on Tuesday 25th November at 6.00pm on ITV1

Christmas shopping?

Don't forget to click through from **easyfundraising** to raise free donations!

1. Visit: www.easyfundraising.org.uk

2. Support:

St George's Church PCC Worthing

3. Shop & raise with over 2,700 retailers

let's
raise

