

## SAINSBURY'S ACTIVE KIDS 2015

Do you shop at Sainsbury's? Don't know what to do with the Active Kids

Vouchers you're offered? Drop them in the basket at the back of the church and they will be divided between our local schools at the end of the scheme.

Sainsbury's



© Sainsbury's Supermarkets Ltd

## BLOOD DONING

Thursday 9th April and  
Monday 13th April  
2 - 4.30pm and 5.30 - 8pm  
Charmandean Centre, Forest Road.

Go to [blood.co.uk](http://blood.co.uk) or call 0300 123 23 23 to book an appointment or just walk in.

## CONTACT INFORMATION:

### VICAR

Phone: 01903 203309  
Email: [vicar.stgeorge@gmail.com](mailto:vicar.stgeorge@gmail.com)

### CHURCH OFFICE

Phone: 01903 219672  
Email: [office@stgeorgesworthing.org.uk](mailto:office@stgeorgesworthing.org.uk)

Office open Monday, Thursday & Friday  
9.3am - 12.30pm

Please get items for Pews News to the office by noon on Thursday

## Safeguarding Representatives:

Children: June Elphick  
Adults: Morag Hardinge  
DBS Checks: Hilary Ferries

More info at: [www.thinkyouknow.co.uk](http://www.thinkyouknow.co.uk)

## WHAT'S ON

### Sunday 29th

8.00am Holy Communion

10.30am Holy Communion

11.30am APCM

3.00pm *Doing the Flowers & Deluxe Cream Tea*

### Monday 30th

10.30am Monday Nomads

### Tuesday 31st

### Wednesday 1st April

10.30am Vicarage Morning Group

7.30pm Vicarage Evening Group

### Thursday 2nd

*Maundy Thursday*

7.30pm The Last Supper

### Friday 3rd

*Good Friday*

10.30pm At the Cross

7.30pm Music Group

### Saturday 4th

8.00am Prayer breakfast

### Sunday 5th

*Easter Day*

8.00am Holy Communion

10.30am Easter Praise

# PEWS NEWS

  
St George's  
Church

St George's Road, Worthing, BN11 2DS

Ecclesiastical Parish of St George,  
East Worthing.  
Registered Charity No 1131206

[www.stgeorgesworthing.org.uk](http://www.stgeorgesworthing.org.uk)

*knowing Jesus and making him known*

SUNDAY 29th March 2015

Palm Sunday

8.00am Holy Communion

10.30am Morning Prayer

## ANNUAL PAROCHIAL CHURCH MEETING

Sunday 29th March 11.30am

*(immediately following this morning's service)*

Please stay after the 10.30am service to vote for 2 Church Wardens and 3 PCC members, and to hear reports on St George's activities last year and plans for the future.

*The meeting should last no more than 1 hour*

## Dying to Save Us

### Easter at St George's

Maundy Thursday 2nd April - 7.30pm

*The Last Supper*

Good Friday 3rd April - 10.30am

*At the Cross*

Easter Sunday 5th April - 10.30am

*Easter Praise Family Holy Communion*

*Please take PEWS NEWS home with you and use as a Prayer and Information Guide throughout the coming week*

## PRAYER NEEDS

Members and friends of the fellowship in need of our prayers this week:  
**Joan Craig; Joy Russell; Margaret Sanders; Taff Taylor**



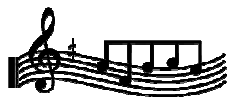
### And for:

- **Jan Holden** as she prepares for her trip to Moldova and the work of **Link to Hope**
- **TEAR New Zealand** and other agencies working in **Vanuatu** following **Cyclone Pam**

The April Parish Prayer breakfast will be next Saturday - 3rd April - at 8am at 48 Seamill Park Crescent. Please join us for a time of prayer followed by a delicious breakfast.

*Please feel free to join us every Sunday morning at 9.45am in the Vicar's Vestry for a time of prayer before the morning service.*

## ORGANIST'S NOTES



The Voluntary after the service today will be the *Obra de 1 Tono de lleno* by Joseph Ximenez, ca. 1602-72, organist at Zaragoza cathedral, who left 22 pieces for organ in MSS. This piece, which is for the same stops in both halves of the keyboard, is based on the notes D-F-C#-D, a cross-shaped figure (called *chiasmus*) which reminds us of the culmination of events in Holy Week. It opens in C time and concludes with a triple-time section with cross-rhythms.

## HOME GROUPS

*Please speak to speak to one of today's Greeters, the Vicar or a Warden if you are interested in joining one of our informal Bible Study Groups*

### Monday 30th

- **Monday Nomads**  
10.30am at 30 Ophir Road

### Wednesday 1st April

- **Vicarage Morning Group**  
10.30am at the Vicarage
- **Vicarage Evening Group**  
7.30pm at the Vicarage

## HUGE THANKS...

On Easter Monday **Jan Holden** is flying to Moldova to work for a week on one of Link to Hope's projects in the poorest country in Europe. Last Sunday she held a Silent Auction in the church hall which, along with donations, raised **£400! Wow! Thank you!** That, plus a £200 donation from St George's Mission Fund, will be used by Link to Hope to help fund the project that Jan will be working on - renovating and setting up a Youth Club.

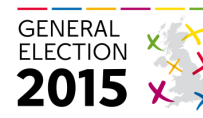


## CHARITY SWIM in aid of the Mayor of Worthing's Charities

Thank you for generously supporting me in my swim of 1500 meters for charity recently. With your help the amount I have collected is £124.77 which will be divided equally between the four charities chosen by the Mayor for 2014/15: WCHP, Faith in Action, One Challenge UK and Go Youth Activities. If you would like to know more about the charities go to [www.worthingmayorscharities.co.uk/index.html](http://www.worthingmayorscharities.co.uk/index.html) and click on the 'charities' tab for more information  
Thank you, Susannah

## HUSTINGS

The elections are just around the corner and Churches



Together in Worthing are planning a 'Hustings'. Five candidates from the main political parties in our area have been invited to come and talk about their policies and also answer questions. This event is taking place on **Thursday 23rd April** at Worthing Baptist Church, Christchurch Road starting at 7 pm aiming to be finished by 9 pm. The venue will seat 200 with room to stand for a further 50. This is not a ticketed event so it will be on a first come first seated basis. Please get involved and come prepared to ask questions and challenge the candidates.

## MAP 2015 INITIATIVES - SPRING UPDATE

'MAP' stands for 'Mission Action Plans' meaning the aims and objectives your Church Council (PCC) agreed in recent months to work at and achieve this year. Anglican Churches throughout the country are encouraged to take this Action Planning approach. A copy of our MAP 2015 sheet is displayed on the notice board at back of the Church. Do have a read and direct any questions to one of our Church Committee members. If you can help or have suggestions for any of these initiatives please let us know.  
*Working together for effective ministry at St Georges and beyond.*

## WALK of WITNESS

Annual **Good Friday Walk of Witness** will take place next Friday starting from the Crescent Road end of Montague Street and moving to the The Square in South Street - just in front of the Guildbourne Centre - at 12 noon. It will conclude with an ecumenical service.

*Helen Taylor & Su Skipp invite you to a..*

***Doing the Flowers Workshop and Deluxe Cream Tea***

***Part 2: Make an Easter Arrangement***

***TODAY***

***3pm in the Church Hall***



Suitable for women & men. Please sign the list at the back of the church.

*Donations received for the Ashburnham weekend.*

## TICKETS...

Helen Attwood has 3 spare tickets for the **Worthing Scout & Guide Gang Show** on **Saturday 4th April**, 2.30pm performance - 1 adult (£12.00) and 2 children (£5.00 each). If you are interested in them please see her as soon as possible.

## AT THE BACK OF THE CHURCH...

you can find:

- the latest prayer letter from **Acorn**
- the latest edition of **Inspire** magazine
- the latest prayer letter from **Katharine Marrow**